



Rabbit anti SERPINC1/AT3(Antithrombin 3) Polyclonal Antibody

Alternative Name(s): SERPINC1; serpin peptidase inhibitor, clade C (antithrombin), member 1

Order Information

- **Description:** SERPINC1/AT3(Antithrombin 3)
- **Catalogue:** 630-130
- **Lot:** See label
- **Size:** 100ug/200ul
- **Host:** Rabbit
- **Clone:** nan
- **Application:** IHC(P), WB
- **Reactivity:** Hu, Ms,

ANTIGEN PREPARATION

A synthetic peptide corresponding to the intra domain 160-175aa of human AT3 protein. This sequence is identical to human, mouse, rat, dog, bovine and chicken.

BACKGROUND

Serpin Peptidase Inhibitor, Clade A (SerpinC1), also known as antithrombin III (AT III), is a member of the serpin superfamily of serine protease inhibitors. SerpinC1 synthesized in the liver is the principal plasma serpin of blood coagulation proteases and inhibits thrombin and other activated serine protease of the coagulation system, such as Xa, by the formation of covalently linked complexes. It regulates the blood coagulation cascade. In common with SerpinA5 and D1, the inhibitory activity of SerpinC1 undergoes a dramatic increase in the presence of heparin and other glycosaminoglycans. The deficiency or functional abnormality of ATIII may result in an increased risk of thromboembolic disease, such as deep vein thrombosis and pulmonary embolism. In addition, it has been reported that SerpinC1 can alter or influence inflammatory processes via inhibition of NF- κ B activation or actin polymerization.

PURIFICATION

The Rabbit IgG is purified by Epitope Affinity Purification

FORMULATION

This affinity purified antibody is supplied in sterile Phosphatebuffered saline (pH7.2) containing antibody stabilizer

SPECIFICITY

This antibody only recognizes ~50 kDa of mouse SERPINC1. It also reacts with human and rat origins. The other species are not tested.

STORAGE

The antibodies are stable for 24 months from date of receipt when stored at -20oC to -70oC. The antibodies can be stored at 2oC-8oC for three month without detectable loss of activity. Avoid repeated freezing-thawing cycles.

APPLICATIONS/SUGGESTED WORKING DILUTIONS*

- Western Blot: 0.1-1 μ g/ml
- ELISA: 0.01-0.1 μ g/ml
- Immunoprecipitation: 2-5 μ g/ml
- IHC: 2-10 μ g/ml
- Flow cytometry: Not tested
- Molecular Weight: 50.0
- Positive Control: Kidney Tissue
- Cellular Location: Cell Membrane

*Optimal dilutions should be determined by researchers for the specific applications.

FOR RESEARCH USE ONLY.

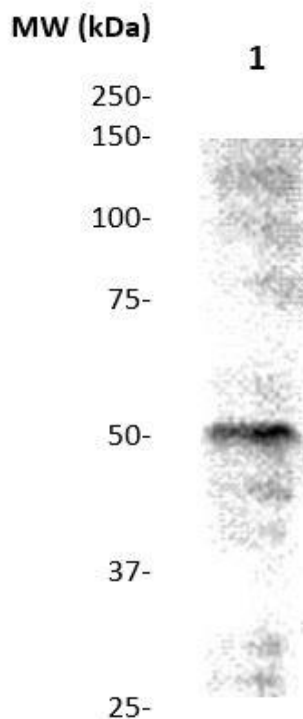
AbboMax, Inc 2528 Qume Drive, Suite 8, San Jose, California 95131, USA
1 408-573-1898 (Tel). 1 408-573-1858 (Fax). www.abbomax.com info@abbomax.com



FOR RESEARCH USE ONLY.

AbboMax, Inc 2528 Qume Drive, Suite 8, San Jose, California 95131, USA
1 408-573-1898 (Tel). 1 408-573-1858 (Fax). www.abbomax.com info@abbomax.com

DATA ATTACHMENTS



Western Blot: The mouse liver tissue lysate was immunoblotted by Rabbit anti AT3 (Cat#630-130) at 1:500. Observed a major immunoreactive band at molecular weight ~50 kDa.

REFERENCES

FOR RESEARCH USE ONLY.

AbboMax, Inc 2528 Qume Drive, Suite 8, San Jose, California 95131, USA
1 408-573-1898 (Tel). 1 408-573-1858 (Fax). www.abbomax.com info@abbomax.com